

ROTRIM 14.10 HYDRAULIC WELD SHEAR

SPECIFICATIONS

I Dimensions (L x W x H)

34 x 17.5 x 13"

I Weight

122.5 lbs

I Shearing Force at Max. Permissible Operating Pressure

With Hand Pump: 500 bar/200 kN

With Hydraulic Power Pack: 550 bar/220 kN

I Max. Stroke

6"



BENEFITS

- I Ergonomic handle for easy use
- I Adjustable trim height reduces finish grinding
- I Stop screws minimize shear blade wear
- I Quadruple pressure pads and dual guides ensure precision

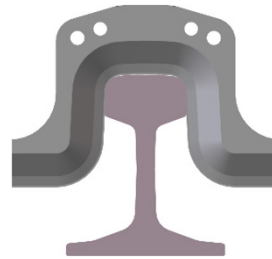
**To weld shear
thermite welded
rail welds.**

ROTRIM 14.10 ACCESSORIES

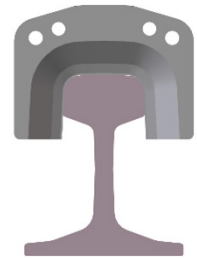
Shear Blade Sets

8859900001	115RE + 119RE
8859900003	132RE
9801410001	136RE

*Different shear blade sets are available upon request.



Shear blade FORM A (with riser)



Shear blade FORM B

